



MagPro™ Elite Magnetic Privacy Screen for Surface Pro 10, Surface Pro 9 & Surface Pro 8

Part Number: K51700WW | UPC Code: 085896517009

Privacy begins on screen.

The move toward hybrid working means that the modern workplace is no longer a single, easy-to-secure location. Users can be working anywhere, with an increased chance of visual hacking. Owners of the Surface Pro 10, Surface Pro 9 and Surface Pro 8 require a privacy screen that can be quickly attached and detached, allowing the laptop to close completely to enter sleep mode. The MagPro™ Elite Magnetic Privacy Screen attaches seamlessly to the Surface Pro's magnetic frame, requiring no inconvenient adhesives. Allowing the device to close completely, the screen narrows the viewing angle to $\pm 30^\circ$, limiting the chance of unauthorized viewing and reducing harmful blue light and glare.

Features include:

- Designed exclusively for Surface Pro
- Seamlessly attaches to the Surface Pro's magnetic frame
- Easy to detach and reattach
- Limits viewing angle to $\pm 30^\circ$
- Reduces harmful blue light and glare, and improves clarity
- Touch and Surface Pen enabled
- Protects screen
- Includes cleaning cloth and protective case

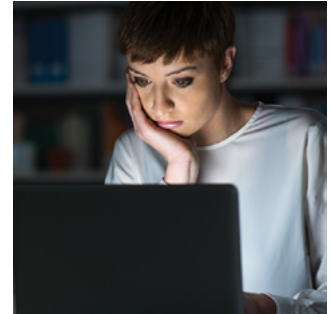
Designed for



**Microsoft
Surface**

MagPro™ Elite Magnetic Privacy Screen for Surface Pro 10, Surface Pro 9 & Surface Pro 8

Part Number: K51700WW | UPC Code: 085896517009



Designed exclusively for Surface Pro

Built in collaboration with Microsoft for exceptional quality, form, fit, and function.

Seamless Magnetic Attachment

Conveniently attaches to — and detaches from — the Surface Pro's magnetic frame. This avoids potentially damaging adhesives from being used, and eliminates any setup process.

Limited Viewing Angle

Narrows the field of vision to $\pm 30^\circ$ degrees, helping you keep the information on your screen private and reducing the chances of a visual data breach in the office or in a public setting.

Blue Light Reduction and Low Reflective Coating

Filters out harmful blue light rays by up to 22%, easing eye strain and reducing the chances of interrupting sleep patterns. Coating reduces glare for improved clarity.



Reversible Viewing

One side has a matte finish to reduce glare and fingerprints. The other side is glossy and provides a clearer view of the monitor.



Touch and Surface Pen Enabled

Allows you to use your Surface Pro just as you would without a privacy screen.



Cleaning Cloth and Protective Case

Helps to keep screen clean and prevent scratches when not in use.

MagPro™ Elite Magnetic Privacy Screen for Surface Pro 10, Surface Pro 9 & Surface Pro 8

Part Number: K51700WW | UPC Code: 085896517009

Material Specification

Privacy Screen	PET
----------------	-----

Product Dimensions

Compatibility	Surface Pro 10 Surface Pro 9 Surface Pro 8
Unit Dimension	8.03 x 11.19in (204.2 x 284.2mm)
Unit Weight	1.55 oz (44g)
Enclosure Color/Material	Black

Packaging Dimensions

Packaging Style	B2B envelope
Packaging Dimensions	15.16 x 10.24 x 0.19in (385 x 260 x 5 mm)
Packaging Weight	6.42 oz (182g)
Master Carton	10 pcs
Master Carton Dimensions	15.75 x 11.61 x 2.76in (400 x 295 x 70mm)
Master Carton Weight	88.18oz (2.5kg)
Packaging Content	Warranty Card, Instruction Guide, Cleaning Cloth, Double sided adhesive tape

Country of Origin, Regulatory, and Warranty

Country of Origin	Taiwan
Warranty	2-Years Warranty



All specifications are subject to change without notice. Products may not be available in all markets. Kensington and the ACCO name and design are registered trademarks of ACCO Brands. Kensington The Professionals' Choice is a trademark of ACCO Brands. All other registered and unregistered trademarks are the property of their respective owners. © 2021 Kensington Computer Products Group, a division of ACCO Brands. All rights reserved. k20-21017p

Kensington
The Professionals' Choice™

FOR MORE INFORMATION CONTACT: 1-855-692-0054 | sales@kensington.com