



# LD5400T Thunderbolt 3 Dock with K-Fob™ Smart Lock

REVIEWER'S GUIDE

Single-User K33476NA/EU  
Multi-User K39470M

## Best-in-Class Docking with Next Gen Locking

Combining a best-in-class Thunderbolt 3 docking experience with next generation laptop locking technology, Kensington delivers a game-changing 2-in-1 docking and locking solution for both Windows and Mac users. The LD5400T dock combines the productivity benefits of Thunderbolt 3 connectivity with K-Fob Smart Lock technology –with a master Fob access option for IT administrators. Get more speed, more pixels, more power and more possibilities while reducing laptop theft and improving compliance with corporate security protocols. Secures thin and light laptops 11-15" in size, including models from Apple, Dell, HP, Lenovo and other manufacturers.

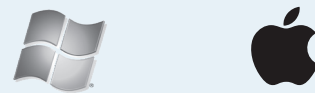
## Features & Benefits

- **Access Options** – Single-User (K33476NA) for a simple locking experience for fixed desk users or Multi-User with Admin Control (K39470M) for hot-desking, hoteling and/or shared workspaces
- **Cross-Platform Compatibility** allows dock to work for both Windows and Mac users
- **Thunderbolt 3 Technology** allows a single port to provide up to 40Gbps of data speed, and connectivity to Thunderbolt-enabled devices, billions of USB devices, and dual 4K UHD displays – all while supplying up to 85W of power to the host device<sup>1</sup>
- **5K for Single Monitor or 4K for Dual Monitors** via DisplayPort v1.2 or HDMI (adapters sold separately; USB-C to HDMI - K33993WW; USB-C to VGA - K33994WW; DisplayPort to HDMI - K33984WW)
- **Productivity Ports** allow users to connect to peripheral accessories via two Thunderbolt 3 ports – one for power delivery and data transfer and one for USB-C compatibility or daisy chaining up to five additional Thunderbolt-enabled devices, four USB 3.0 ports (5V/0.9A), one 1Gbps Ethernet port, and a combo 3.5mm audio in/out port
- **K-Fob™ Smart Lock Technology** provides encrypted security with the simplicity of keyless locking
- **Professional Locking Design** conforms to Kensington's industry-leading testing standards for durability, provides unobstructed access to the laptop's side ports and does not require any laptop modifications
- **Adjustable Security Arms** accommodate 11"-15" thin and light laptops and easily adjust without tools
- **Scratch-Resistant Bumpers** protect laptop screen and frame from cosmetic damage
- **Flexible Security Options** allow you to secure the station to any fixed object using the removable tethered lock cable, or use the built-in Kensington Security Slot with a cable lock, or permanently secure using the desktop mounting holes
- **Register & Retrieve™** program provides free and secure cloud-based key fob replacement

<sup>1</sup> Only compatible with laptops equipped with Thunderbolt 3 ports; not backwards compatible with Thunderbolt 1 or Thunderbolt 2. For Windows based devices, ensure your laptop supports Power Delivery.

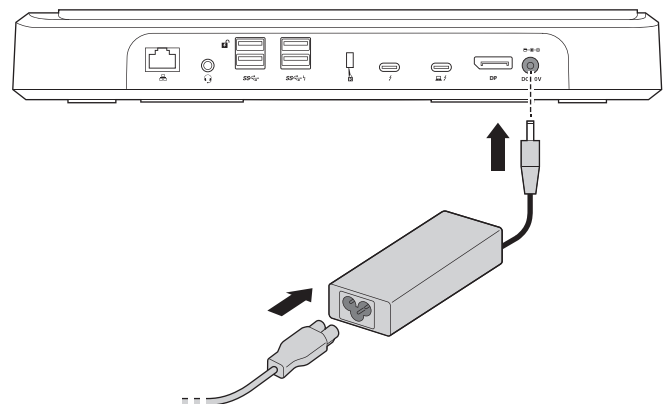
## Compatibility

- Windows 10 and macOS 10.13 or later
- Works with 11"-15" thin and light laptops



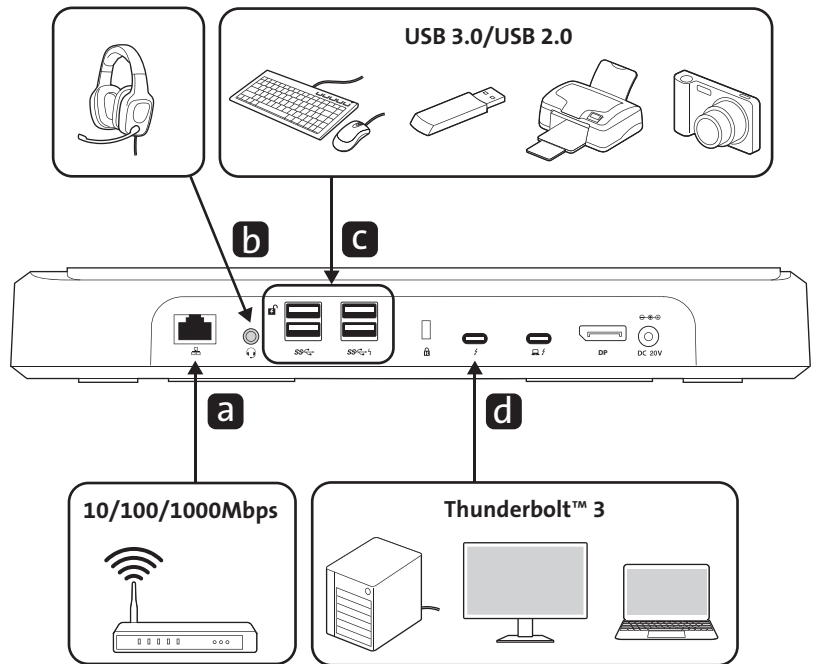
### 1. Power the dock

- a. Connect the included AC adapter to the back of the dock and plug it into the wall outlet.



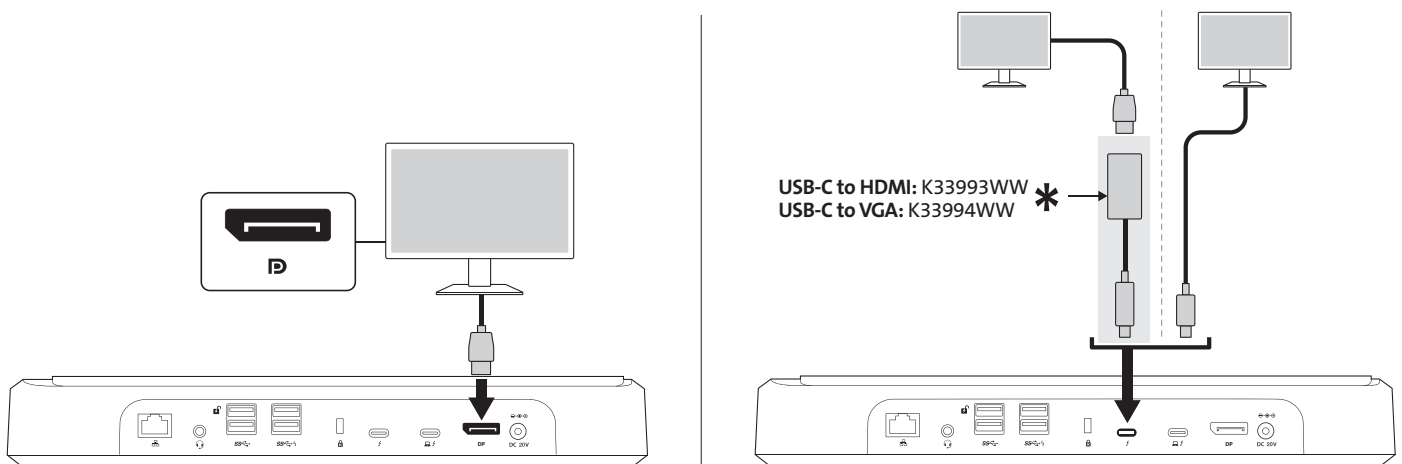
## 2. Connect preferred accessories

- a.** Plug-in a RJ45 cable into the Gigabit Ethernet port for a reliable networking connection.
- b.** Connect your headset to the combo 3.5mm audio in/out port.
- c.** Connect your preferred peripheral accessories to any of the 4 USB 3.0 ports (5V/0.9A).
- d.** Use the extra Thunderbolt 3 port for USB-C compatible accessories or daisy chaining up to five additional Thunderbolt-enabled devices.



## 3. Connect your monitor(s)

The LD5400T can accommodate up to 5K for a Single Monitor or up to 4K for Dual Monitors via DisplayPort v1.2 or HDMI (adapters sold separately).



## 4. Secure your laptop

### FOR SINGLE-USER (K33476NA/EU)

**A.** Slide the laptop into position.

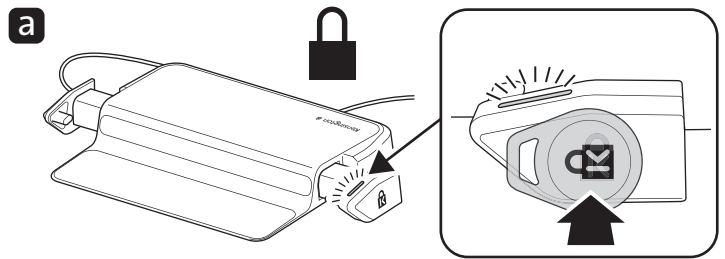


**B.** Manually close the Laptop Security Arms. The green LED indicates that the station is in locking status.

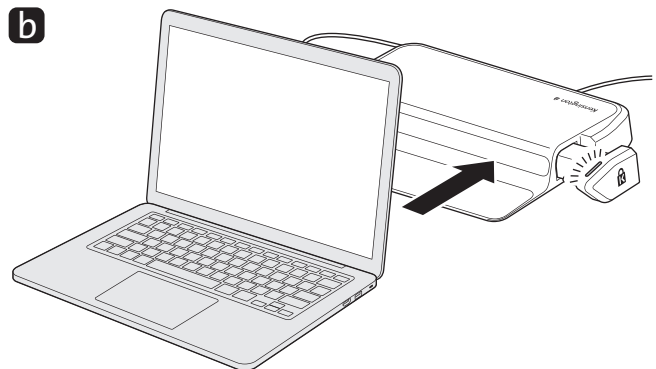


### FOR MULTI-USER (K39470M)

**a.** Register the K-Fob you would like to use by placing it directly on top of the Kensington lock icon. A green LED light will confirm that the K-Fob has been accepted.



**b.** Slide the laptop into position.



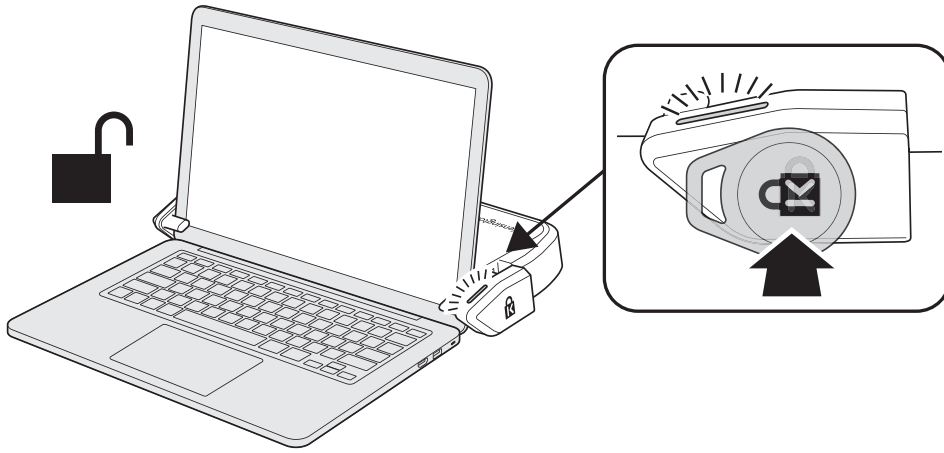
**c.** Manually close the Laptop Security Arms.





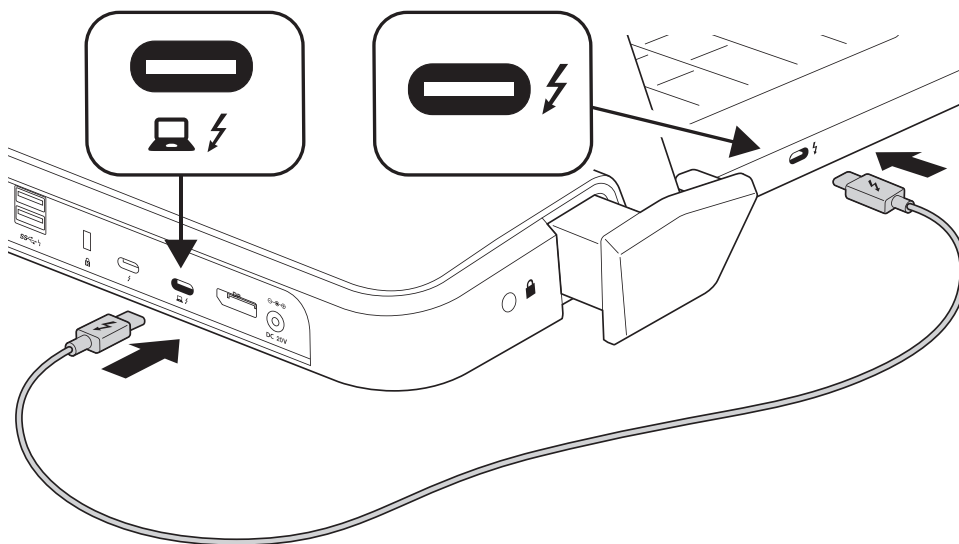
## 5. Releasing the laptop

When you are ready to release the laptop, use the same K-Fob used in step 4 above and place it directly on top of the Kensington lock icon. A blue LED light will confirm that the correct K-Fob is being used and the arms will open within 1.5 seconds. If a K-Fob with a different key code is used, a red flashing LED will appear and the arms will not open.



## 6. Connect the laptop to the dock

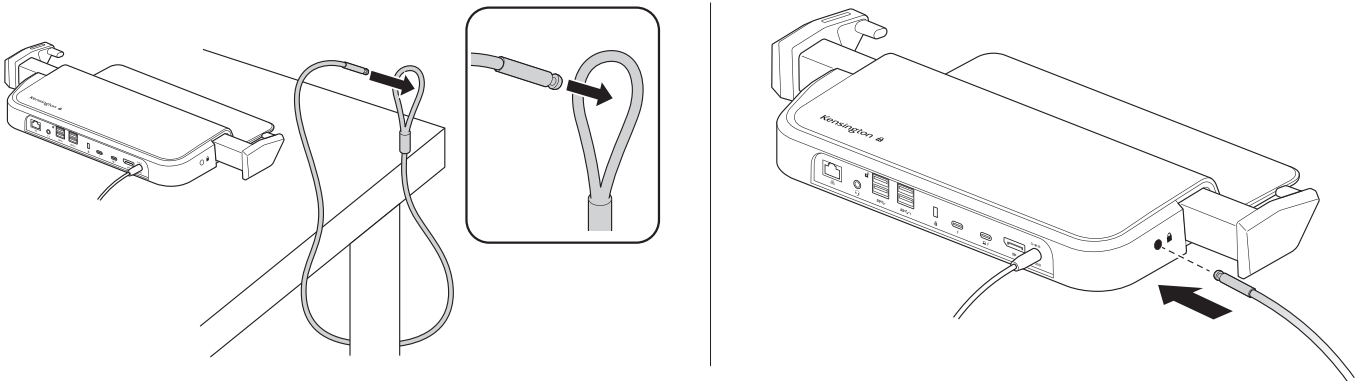
Using the included Thunderbolt 3 cable, connect your laptop to the dock using the Thunderbolt 3 ports on each device. The Thunderbolt 3 port to use for power pass-through is the one with the computer icon next to it. This will provide up to 85W of power pass-through to the laptop.



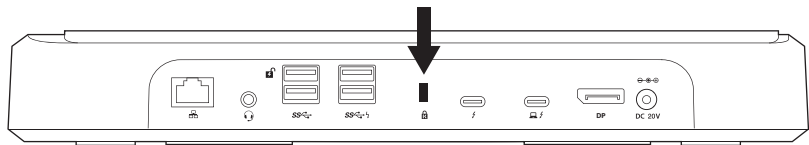
## 7. Secure the dock to a fixed location

Select the preferred location for your dock and secure it to any fixed object using one of the following methods.

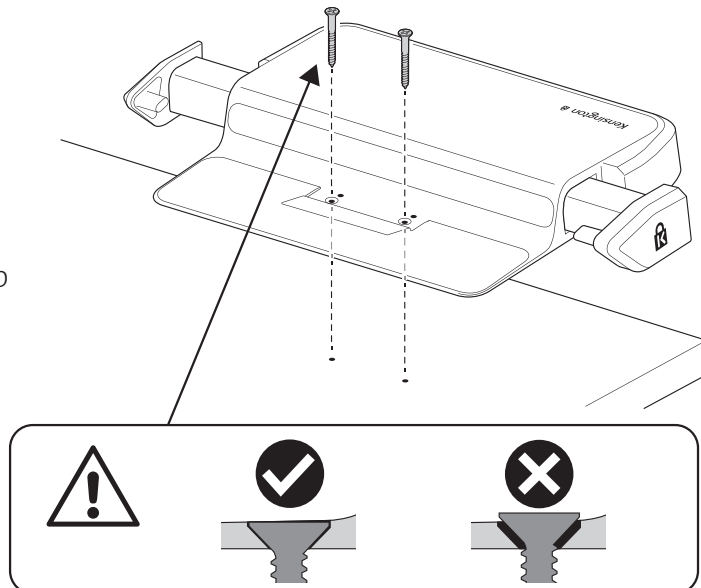
- a.** Removable tethered lock cable. Note: To release the tethered lock cable, you will need to remove the laptop (see Step 5), manually extend both of the Adjustable Security Arms, and then pull on the tethered cable to disconnect it. .



- b.** Optionally: use the built-in Kensington Security Slot with a cable lock.

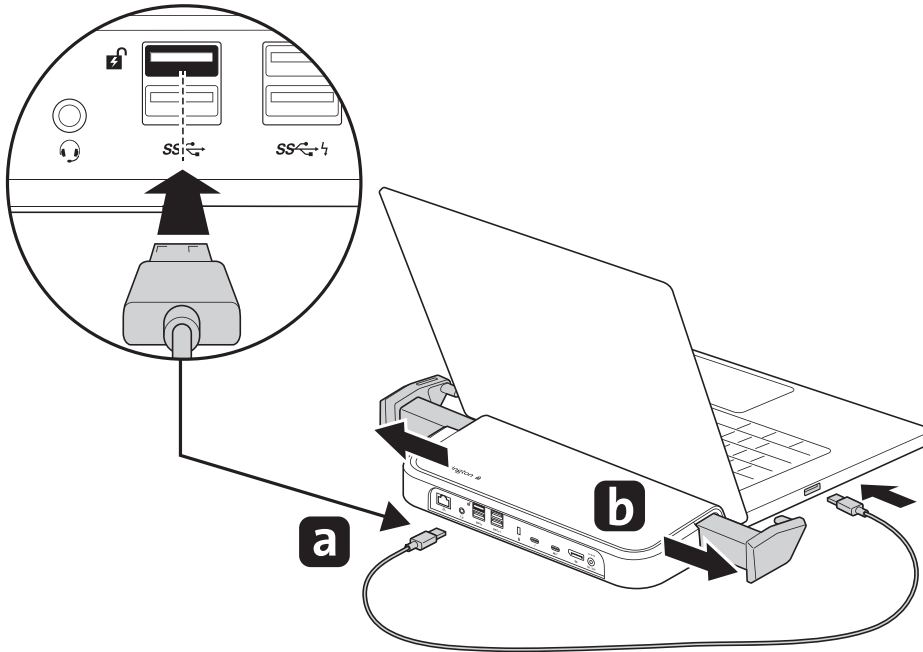


- c.** Permanently secure using the desktop mounting holes with M4 screws (screws not included).



## 7. Emergency release cable for loss of power

In case of a loss of power, a USB A/A Male/Male cable is provided to allow the laptop to be released from the docking station (not operating the docking station). Simply connect the cable as shown and make sure that the laptop is running on battery power. Once done, place your K-Fob directly on top of the Kensington lock icon to release the laptop.



LD5400T Thunderbolt 3 Dock with K-Fob™ Smart Lock  
Single User (K33476NA/EU)  
Multi-User (K39470M)

If you have any questions, please contact Kensington at: [globalmarketing@kensington.com](mailto:globalmarketing@kensington.com)