



SmartFit™ Conform™ Back Rest

Part Number: K60412WW | UPC Code: 0 85896 60412 9

Ergonomic back support for nearly any chair.



Professionals who spend long hours sitting at a desk often struggle with back discomfort. The SmartFit™ Conform™ Back Rest supports a more comfortable sitting position. The heightadjustable design supports proper ergonomic fit for your lumbar and works in nearly any chair. With its portable design, you will be more comfortable working extended hours whether you are at your desk or on the go.

Features include:

- SmartFit™ supports proper ergonomic fit
- Height adjustable for customizable lumbar support
- Independent springs conform to fit your body
- Ventilated supports keep the back cool and dry
- Removable, machine-washable fabric cover
- TAA Compliant

SmartFit™ Conform™ Back Rest

Part Number: K60412WW | UPC Code: 0 85896 60412 9



SmartFit™ - Comfort Made Easy

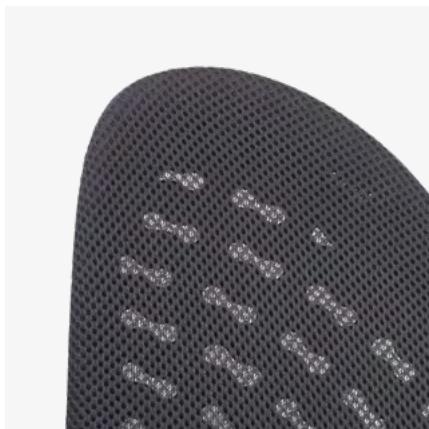
Supports proper ergonomic fit for your lumbar and full spinal support using data-driven research and a color-coded fitting chart to support quick and intuitive height-setting.

Height Adjustable

Slide the base up or down to your comfort color to set your back rest at the proper height, providing the maximum comfort and support for your spine and lumbar while sitting in a chair.

Four Independent Springs

Conform to your body type and articulate with any subtle movements in your posture so you always have great support to leave your back muscles more relaxed.



Ventilated Supports

Dissipates heat when you sit in the chair for long periods of time, keeping your back cool and dry for a more comfortable sitting experience.

Removable, Washable Fabric

Simply slide the covers off the supports and place them in a washing machine in case of accidental drink or food spill, or when you just want to freshen up the fabric.

SmartFit™ Conform™ Back Rest

Part Number: K60412WW | UPC Code: 0 85896 60412 9

Material Specifications

Exterior	PP
Product Color	Black

Product Dimensions

Unit Dimensions	5.5 x 17.3 x 16.1in (140 x 440 x 410mm)
Unit Weight	3.8lbs (1.75kg)
Enclosure Color & Material	Black PP

Packaging Dimensions

Packaging Style	Retail Box
Packaging Dimensions	11.8 x 17.7 x 17.3in (300 x 450 x 440mm)
Packaging Weight	9.0lbs (4.1kg)
Packaging Content	1 x SmartFit™ Conform™ Back Rest 1 x Instruction Guide 1 x Warranty Card
Master Carton	2 pcs

Country Of Origin, Regulatory, and Warranty

Country of Origin	Taiwan
Certifications & Compliance	RSL
Warranty	1-Year Limited - worldwide



All specifications are subject to change without notice. Products may not be available in all markets. Kensington® and Kensington, The Professionals' Choice™ are trademarks of ACCO Brands. All other registered and unregistered trademarks are the property of their respective owners. © 2024 Kensington Computer Products Group, a division of ACCO Brands. k24-4400

Kensington

The Professionals' Choice™